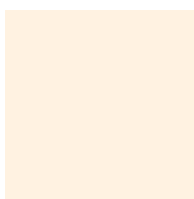


## Carta de color Tapajuntas Pulmor



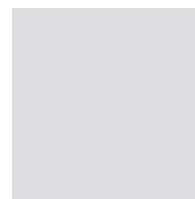
BLANCO



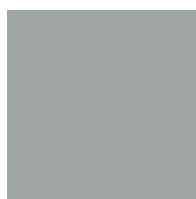
MARFIL



CREMA



PLATA



CEMENTO



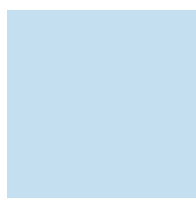
NEGRO



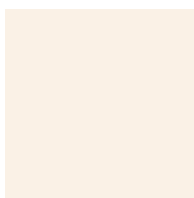
GRAFITO



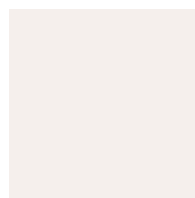
MUSGO



CELESTE



JAZMÍN



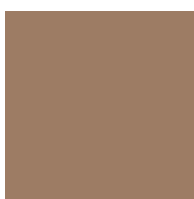
SEDA



PIEDRA



BEIGE



CARAMELO



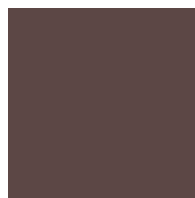
MARRÓN



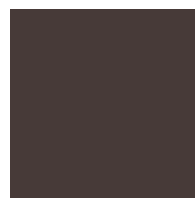
TERRACOTA



NOGAL



CHOCOLATE



WENGUÉ

Colores orientativos. Para obtener muestrario de los productos contacte con nuestro departamento comercial.